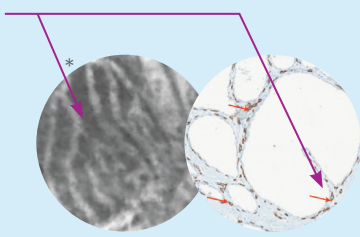


# IMAGE INTERPRETATION CRITERIA for Pancreatic Cysts (nCLE)

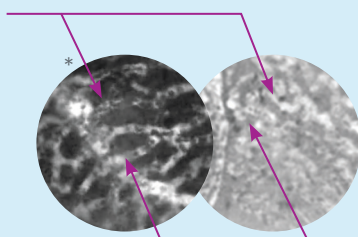
Cellvizio.net

## SEROUS CYSTADENOMA

Connected Blood Vessels



Vessels with variable width



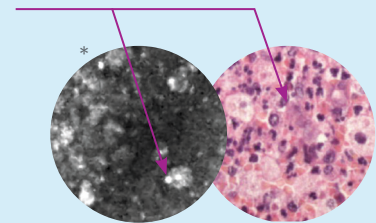
Visualization of Blood Vessels

Superficial vascular network

## PSEUDOCYST

Tip: if it is a re-puncture case and a secondary criterion is visible, it is not a pseudocyst. The field of bright particles may be caused by inflammation of previous punctures

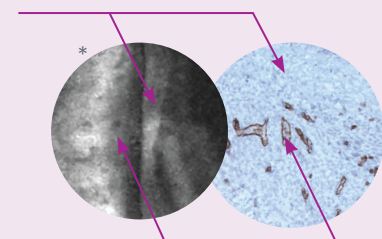
Field of bright particles



## MUCINOUS CYSTADENOMA

Tip: the epithelial border may be single in this case (different from the IPMN case)

Cyst wall with epithelial border

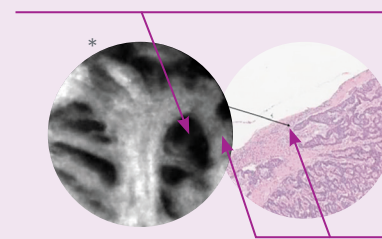


Vascular Flow

## CYSTIC NEUROENDOCRINE TUMOR

Tip: criteria may also be observed in other rare types of malignant cystic lesions, such as cystic solid pseudopapillary neoplasm

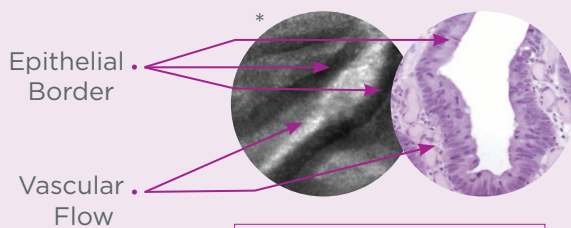
Black neoplastic cells clusters



White fibrous bands

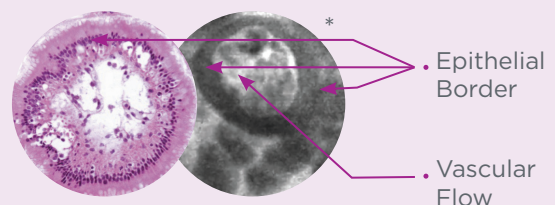
## INTRADUCTAL PAPILLARY MUCINOUS NEOPLASM

Tip: if you see an epithelial border, look for the other one that should be associated with it (both epithelial borders of the papillae)



Finger-like projections

Papillae

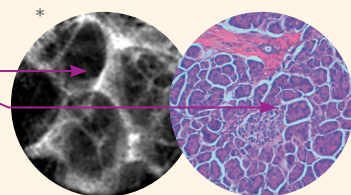


Dark ring with white core

## DESCRIPTIVE CRITERIA FOR NORMAL PANCREAS

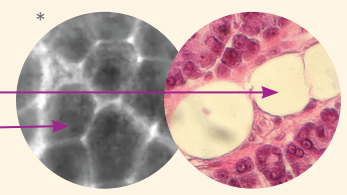
### ACINI

Dark Lobular Structures ("Coffee Beans")



### ADIPOCYTES

Grey Oval Structures



\*Criteria based on : 1. Napoléon B. et al. A novel approach of the diagnosis of pancreatic cystadenoma: nCLE for the diagnosis of pancreatic cysts. *Endosc.* 2015 (CONTACT 1 STUDY); 2. Napoléon B. et al. In vivo characterization of pancreatic cystic lesions by needle-based confocal laser endomicroscopy (nCLE): proposition of a comprehensive nCLE classification confirmed by an external retrospective evaluation. *Surg. Endosc.*, 2016; 3. Napoléon B. et al. Needle-based confocal laser endomicroscopy of pancreatic cystic lesions: a prospective multicenter validation study in patients with definite diagnosis. *Endoscopy*, 2018 (CONTACT 2 STUDY).

Cellvizio® I.V.E. with Confocal Miniprbes™ are regulated Medical Devices, CE marked (CE 0459) (Class IIa - NB : G-MED) and FDA cleared. Cellvizio® I.V.E. with Confocal Miniprbes™ is a confocal laser system with fiber optic probes that are intended to allow imaging of the internal microstructure of tissues including, but not limited to, the identification of cells and vessels and their organization or architecture. Please consult labels and instructions for use. Product availability cannot be guaranteed in all countries. For further information, please contact your local sales representative. Please note that the interpretation criteria are suggested descriptive features and do not represent definitive diagnostic landmarks and are a result of input from trained and well qualified person. Any diagnostic assessment should always be made by the attending physician, based on the evaluation of all sources of clinical, endoscopic and other relevant information. These statements have not been reviewed, cleared, or approved by the U.S. FDA. The use of this medical device is exclusively reserved for health professionals.